

Eaton 9PX G2 VRLA UPS



Eaton's 9PX G2 VRLA UPS provides high power density, enhanced battery management, best-in-class efficiency, maximum power reliability, simplified fleet management and certified cybersecurity.



Powering Business Worldwide

Eaton 9PX G2 VRLA UPS

Featuring advanced technology upgrades and customer-centric feature enhancements, Eaton's 9PX G2 online double-conversion UPS builds on the highly successful 9PX platform to create a best-in-class power management solution. Industry-leading hardware technology and Brightlayer software allow end users and service providers to deploy distributed edge applications with confidence, simplify fleet management and proactively monitor all critical equipment.



Higher power density

Using wide-bandgap (WBG) technology, the 9PX G2 UPS maximizes usable output power per UPS and allow you to support more devices. Rack size is also reduced for several models, saving valuable space for revenue-generating equipment. **8-11 kVA models shrink from 6U to 4U while providing four L6-30R outlets!**



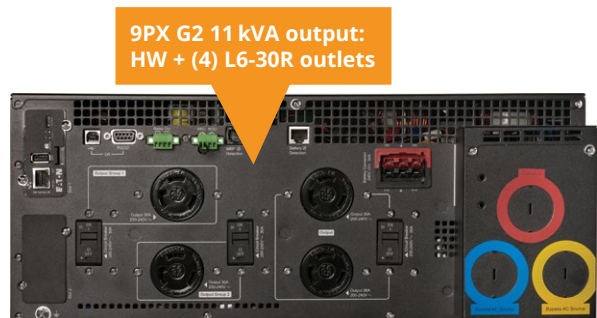
9PX G1 11 kVA UPS + battery **6U**



9PX G2 11 kVA UPS + battery **4U**



* Version with MBP includes (3) L6-30R outlets on MBP.



Enhanced battery management

Eaton's new ABM+ technology improves predictive battery replacement analytics to better pinpoint when you should replace UPS batteries. This predictive algorithm allows the UPS to proactively alert the user of battery health and remaining service life based on actual usage and conditions. ABM+ prevents unexpected downtime caused by waiting too long and unnecessary expense caused by replacing too soon. It also optimizes charging to increase battery lifespan up to 50%. If batteries require replacement, they are hot-swappable and accessible from the front of the rack enclosure.



Versatile configurations

The 9PX G2 UPS has the versatility to meet the demands of a wide array of IT applications. 208V and 120V output options are available with or without maintenance bypass, and each UPS includes a 4-post rackmount rail kit and tower stands. An optional mounting kit also supports 2-post rack installation. The LCD and badge rotate to match the UPS cabinet's orientation.



Maximum power reliability

With true online double conversion, hot-swappable batteries, internal bypass and optional 0U maintenance bypass, the 9PX G2 VRLA UPS is perfect for preventing costly downtime of critical equipment in distributed edge deployments. Out of the box, each UPS supports up to 12 optional extended battery modules (EBMs), and adaptive charging allows faster recharge times. The UPS can be configured to provide hours of battery backup runtime to support sites without generator backup.



A 6 kVA 9PX G2 VRLA UPS and 12 EBMs are shown mounted in an Eaton heavy-duty rack enclosure that supports up to 5,000 pounds. This configuration can support 3 kW for over 6 hours. (See page 12 for complete runtime charts. Learn more about Eaton heavy-duty racks at: Eaton.com/HDRack)



Maintenance bypass for 8-11 kVA UPS

Maintenance bypass for 3-6 kVA UPS

IEC maintenance bypass for 3-6 kVA UPS

The maintenance bypass module prevents service-related downtime and does not require additional rack space. It can be mounted behind the UPS, on the side or top of a rack, on a wall or in a tower orientation using the included hardware.

Best-in-class efficiency

Up to
97%
efficiency

With up to 97% efficiency in online mode, the 9PX G2 is the most efficient UPS in its class, reducing energy costs and TCO. All models are certified to comply with the latest

ENERGY STAR standards to reduce greenhouse gas emissions. Load segments with energy metering help IT managers optimize energy use. Sustainable product packaging also helps reduce environmental impact.



High-visibility control panel

With a high-contrast LCD that tilts up to 45 degrees for optimal viewing, the 9PX G2 VRLA UPS makes local management easy. The LCD displays key data like load, efficiency, runtime remaining and alarms. A large color LED status bar below the LCD helps you diagnose the UPS from a distance and quickly locate units that require attention, even in a crowded data center.



The LED status bar glows blue during normal operation and changes color to indicate automatic bypass, faults and other conditions.

Simplified fleet management

Every 9PX G2 VRLA UPS (3–11 kVA) comes with a cybersecure Gigabit Network Card, allowing you to monitor and manage your UPS fleet remotely for greater convenience and peace of mind.

For smaller environments, you can connect to UPSs using a web browser and receive email alerts. For larger deployments spanning multiple locations, 9PX G2 UPSs integrate smoothly via SNMP with digital solutions from our **Brightlayer portfolio**.

Brightlayer Disaster Avoidance software helps you monitor, manage and control power equipment in physical or virtual environments with up to 25 UPSs and PDUs.

- Gracefully shut down IT equipment in the order required for safe and quick recovery from outages.
- Keep critical workloads running longer during outages by limiting server power consumption and suspending non-critical virtual machines.

Brightlayer Distributed IT software helps you remotely monitor and control up to thousands of UPSs and PDUs at remote sites in any location.

- Know what's happening with real-time reports, trend charts, dashboards and alerts prioritized by severity.
- Troubleshoot and resolve issues more quickly.
- Remotely control load segments regardless of vendor.
- Update firmware remotely to improve cybersecurity.
- Leverage integrations with virtualization platform leaders.
- Gracefully shut down IT equipment.

Brightlayer DCIM software helps you manage power, space, connectivity and cooling to maximize uptime while minimizing capital and operating costs.

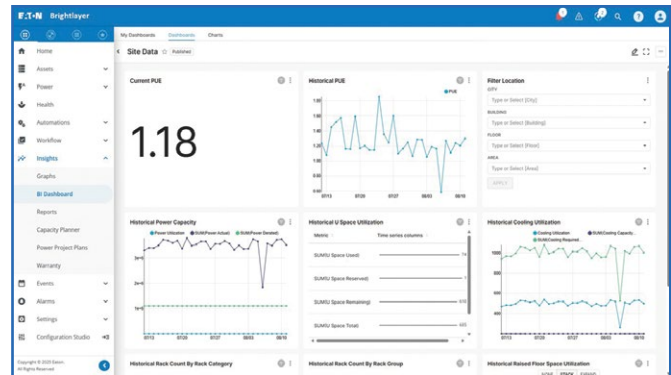
- Gain efficiencies and reduce costs with real-time data and automated alerts.
- View 2D and 3D visualizations and automated reports.
- Gain near-real-time visibility into key performance indicators.

Brightlayer EPMS software provides advanced monitoring and management of valuable power equipment and environmental conditions, with powerful diagnostic tools.

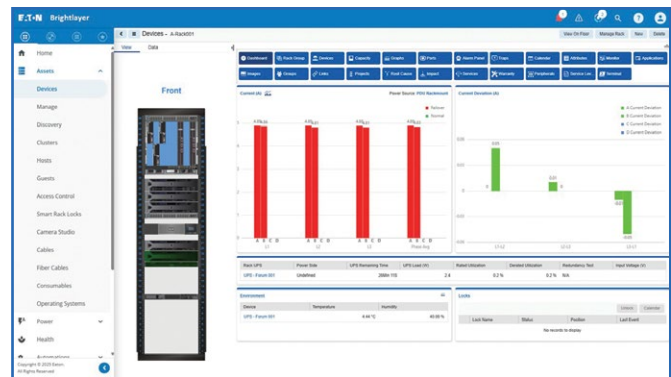
- Monitor conditions and react to issues with 24/7 visibility into electrical power assets, regardless of location or vendor.
- Identify and resolve issues through power quality and waveform analysis, high-resolution datasets and one-line diagrams.
- Access sophisticated dashboards, trend charts, energy modelling and reports.

Brightlayer Remote Monitoring Service, also known as PredictPulse, provides 24/7 remote monitoring and predictive analytics to forecast failures before issues arise and dispatches field service technicians when needed.

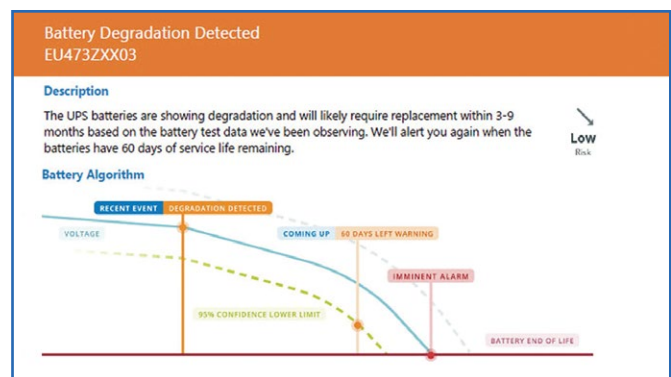
- Know about future component failures before they happen.
- Gain fast response and repairs from Eaton technicians.
- Access real-time health trends, alarms and outages prevented.



Remote power management dashboard from Brightlayer Distributed IT software.



Data center rack view from Brightlayer DCIM software.



Battery condition notification from Brightlayer Remote Monitoring Service.

Certified cybersecurity

9PX G2 VRLA UPSs include Eaton's cybersecure network management card (**NETWORK-M3**), which is UL 2900-1 and IEC 62443-4-2 listed, providing industry-leading cybersecurity and automation features.

Zero-trust architecture

- Minimizes cybersecurity vulnerabilities through hardware root of trust, enabling secure boot and complete chain of trust with private hardware key encryption.

Zero-touch provisioning

- Automatically configures equipment to save time and reduce errors in large-scale deployments.

User-configurable firewall

- Reduces your organization's attackable surface area.
- Helps meet network/security compliance requirements.
- Supports IP white list.

RESTful API

- Allows you to easily integrate networked UPSs with native systems and automate M2M interactions.

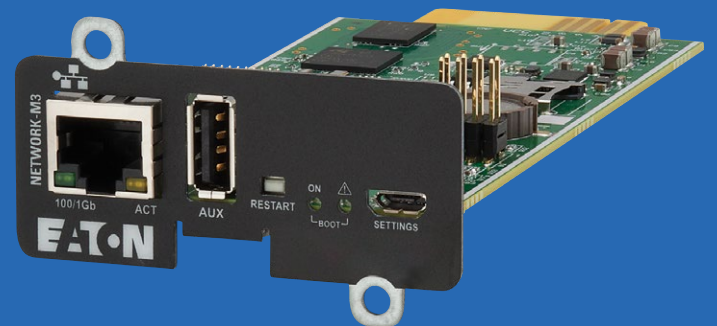
Secure access via web browser or SNMP

- Access UPSs using the secure web browser interface or integrate with a network management system via SNMP.



You can upgrade 9PX G2 UPS firmware remotely through the included network card to keep UPSs at all your remote sites updated with the latest features and security.

Firmware updates are free of charge and do not require a service contract.



Ready for virtualization, HCI and AI

Brightlayer software enables seamless integration and intelligent coordination with virtualized, hyperconverged and generative AI infrastructures. Support for complex orchestrations during blackouts and other power events allows you to extend runtime, preserve data and gracefully shut down or migrate servers per your preferences.

Eaton is the leader in power management for virtualization platforms and has more than 500 hours invested in testing with alliance partners like Cisco, Dell, HPE, NetApp, Nutanix, Scale Computing and VMware.

Learn more at [Eaton.com/alliances](https://www.eaton.com/alliances)



Eaton 9PX G2 rear panel overview

Model 9PX6KG2 UPS (3U, 6 kVA, 208V output; 3 and 5 kVA models are similar)



Model 9PXTFMR5G2 step-down transformer (3U, 5 kVA, 120V output)



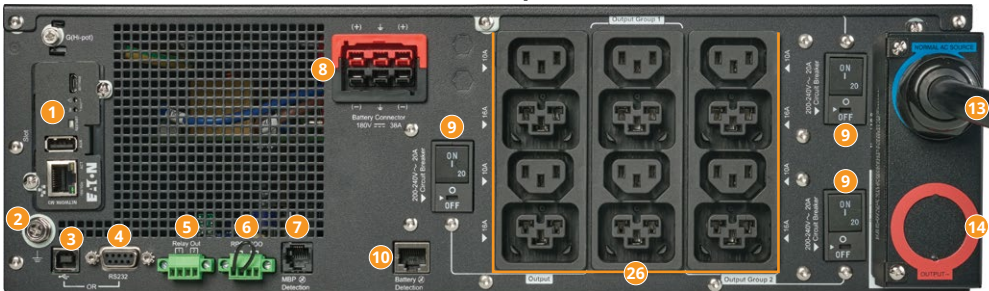
Model 9PXPPDM1G2 PPDM (3U, 208V + 120V output)



Model 9PXPPDM2G2 PPDM (3U, 208V + 120V output)



Model 9PX6KIEG2 UPS (3U, 6 kVA, 208V output)

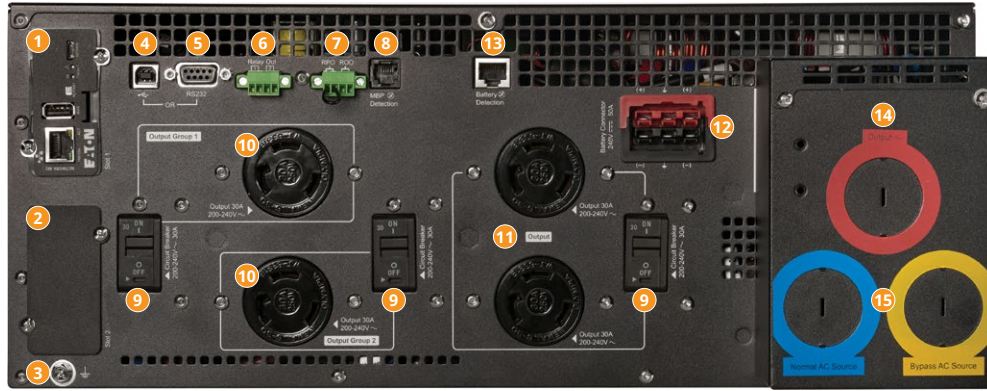


- 1 Network management card (NETWORK-M3; included with UPS)
- 2 Ground bonding screw
- 3 USB port (cable included)
- 4 RS-232 serial port (cable included)
- 5 Output relay contact
- 6 Remote power off (RPO) and remote on/off (ROO) contacts
- 7 Maintenance bypass module detection port
- 8 Extended battery module (EBM) connector
- 9 Output circuit breaker(s)
- 10 EBM detection port
- 11 (2) NEMA L6-30R outlets (metered load segment)
- 12 NEMA L6-20R outlet (metered load segment)
- 13 AC input cord with L6-30P plug
- 14 Hardwired AC output
- 15 Main circuit breaker
- 16 (18) NEMA 5-20R outlets (also function as 5-15R)
- 17 3 ft. AC input cord with L6-30P plug
- 18 Front-panel voltage selection switch
- 19 (6) NEMA 5-20R outlets (also function as 5-15R)
- 20 NEMA L6-30R outlet
- 21 NEMA L14-30R outlet
- 22 NEMA L6-30R outlet for UPS input connection
- 23 3 ft. AC input cord with L6-30P plug for UPS output connection
- 24 Front-panel maintenance bypass switch
- 25 Hardwired AC input
- 26 (6) C13 and (6) C39 outlets arranged in 3 metered load segments (C39 outlets combine C13 and C19 functionality to increase flexibility and save space)



Eaton 9PX G2 rear panel overview (continued)

Model 9PX11KG2 UPS (4U, 11 kVA, 208V output; 8 kVA model is similar)



Model 9PXTFMR11G2 step-down transformer (3U, 10 kVA, 208V + 120V output)



Not shown: 19

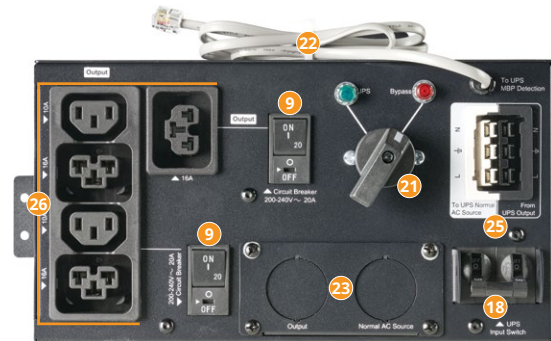
Model MBP11K208G2 maintenance bypass module (0U)



Model MBP6K208G2 maintenance bypass module (0U)



Model MBP6KIECG2 maintenance bypass module (0U)



- 1 Network management card (NETWORK-M3; included with UPS)
- 2 Second communication slot
- 3 Ground bonding screw
- 4 USB port (cable included)
- 5 RS-232 serial port (cable included)
- 6 Output relay contact
- 7 Remote power off (RPO) and remote on/off (ROO) contacts
- 8 Maintenance bypass module detection port
- 9 Output circuit breaker(s)
- 10 NEMA L6-30R outlet (metered load segment)
- 11 (2) NEMA L6-30R outlets (metered load segment)
- 12 Extended battery module (EBM) connector
- 13 EBM detection port
- 14 Hardwired AC output
- 15 Hardwired AC input
- 16 NEMA L14-30R outlet
- 17 (8) NEMA 5-20R outlets (also function as 5-15R)
- 18 Main circuit breaker
- 19 Front-panel voltage selection switch
- 20 NEMA L6-30R outlet
- 21 Maintenance bypass switch
- 22 Bypass detection cable
- 23 Hardwired AC input/output
- 24 NEMA L6-20R outlet
- 25 Bypass connection port
- 26 (2) C13 outlets and (3) C39 outlets (C39 outlets combine C13 and C19 functionality to increase flexibility and save space)

Eaton 9PX G2 VRLA UPS (3–11 kVA) model selection guide

For complete technical specifications or to find lithium-ion models, please visit Eaton.com/9PXG2

9PX G2 VRLA UPS								
Catalog number	Rack size	Power rating (VA/watts)	Default AC input/output voltage	Maintenance bypass	Efficiency (online)	Input connection (HW = hardwired)	Output connections (HW = hardwired)	Unit dimensions (hwd) and weight
9PX G2 VRLA UPS with 208V output (200V, 208V, 220V, 230V, 240V)								
9PX3K3UG2	3U	3000/3000	208V	Optional	96%	HW or L6-30P, 10 ft.	HW + (2) L6-30R + (2) L6-20R	5.1 x 17.3 x 27 in., 98.3 lb.
9PX5KG2	3U	5000/5000	208V	Optional	96%	HW or L6-30P, 10 ft.	HW + (2) L6-30R + (2) L6-20R	5.1 x 17.3 x 27 in., 98.3 lb.
9PX6KG2	3U	6000/5400*	208V	Optional	96%	HW or L6-30P, 10 ft.	HW + (2) L6-30R + (2) L6-20R	5.1 x 17.3 x 27 in., 98.3 lb.
9PX6KIECG2	3U	6000/5400*	208V	Optional	96%	HW or L6-30P, 10 ft.	HW + (6) C39 + (6) C13	5.1 x 17.3 x 27 in., 98.3 lb.
9PX8KG2	4U	8000/8000	208V	Optional	96.5%	HW	HW + (4) L6-30R	6.8 x 17.3 x 28.6 in., 173.7 lb.
9PX11KG2	4U	11000/11000	208V	Optional	97%	HW	HW + (4) L6-30R	6.8 x 17.3 x 28.6 in., 173.7 lb.
9PX G2 VRLA UPS bundles with 208V or 208V + 120V output (Preconfigured bundles simplify configuration and deployment; many other custom bundle options are available.)								
9PX3K3UNP1G2	6U	3000/3000	208V/208V + 120V	Included	96%	L6-30P, 6.5 ft.	(1) L6-30R + (6) 5-20R + (1) L14-30R	10.2 x 17.3 x 27 in., 203 lb.
9PX3K3UNP1G2 bundle includes: 9PX3K3UG2 UPS + 9PXPPDM1G2 PPDM with integrated maintenance bypass. See below for PPDM description.								
9PX3K3UNP2G2	6U	3000/3000	208V/208V + 120V	Included	96%	HW	HW	10.2 x 17.3 x 27 in., 203 lb.
9PX3K3UNP2G2 bundle includes: 9PX3K3UG2 UPS + 9PXPPDM2G2 PPDM with integrated maintenance bypass. See below for PPDM description.								
9PX3K3UNTF5G2	6U	3000/3000	208V/208V + 120V	Optional	96%	HW or L6-30P, 10 ft.	(1) L6-30R + (2) L6-20R + (18) 5-20R	10.2 x 17.3 x 27 in., 203 lb.
9PX3K3UNTF5G2 bundle includes: 9PX3K3UG2 UPS + 9PXTFMR5G2 step-down transformer. See below for transformer description.								
9PX5KP1G2	6U	5000/5000	208V/208V + 120V	Included	96%	L6-30P, 6.5 ft.	(1) L6-30R + (6) 5-20R + (1) L14-30R	10.2 x 17.3 x 27 in., 203 lb.
9PX5KP1G2 bundle includes: 9PX5KG2 UPS + 9PXPPDM1G2 PPDM with integrated maintenance bypass. See below for PPDM description.								
9PX5KP2G2	6U	5000/5000	208V/208V + 120V	Included	96%	HW	HW	10.2 x 17.3 x 27 in., 203 lb.
9PX5KP2G2 bundle includes: 9PX5KG2 UPS + 9PXPPDM2G2 PPDM with integrated maintenance bypass. See below for PPDM description.								
9PX5KTF5G2	6U	5000/5000	208V/208V + 120V	Optional	96%	HW or L6-30P, 10 ft.	(1) L6-30R + (2) L6-20R + (18) 5-20R	10.2 x 17.3 x 27 in., 203 lb.
9PX5KTF5G2 bundle includes: 9PX5KG2 UPS + 9PXTFMR5G2 step-down transformer. See below for transformer description.								
9PX6KP1G2	6U	6000/5400	208V/208V + 120V	Included	96%	L6-30P, 6.5 ft.	(1) L6-30R + (6) 5-20R + (1) L14-30R	10.2 x 17.3 x 27 in., 203 lb.
9PX6KP1G2 bundle includes: 9PX6KG2 UPS + 9PXPPDM1G2 PPDM with integrated maintenance bypass. See below for PPDM description.								
9PX6KP2G2	6U	6000/5400	208V/208V + 120V	Included	96%	HW	HW	10.2 x 17.3 x 27 in., 203 lb.
9PX6KP2G2 bundle includes: 9PX6KG2 UPS + 9PXPPDM2G2 PPDM with integrated maintenance bypass. See below for PPDM description.								
9PX6KTF5G2	6U	6000/5400	208V/208V + 120V	Optional	96%	HW or L6-30P, 10 ft.	(1) L6-30R + (2) L6-20R + (18) 5-20R	10.2 x 17.3 x 27 in., 203 lb.
9PX6KTF5G2 bundle includes: 9PX6KG2 UPS + 9PXTFMR5G2 step-down transformer. See below for transformer description.								
9PX8KMG2	4U	8000/8000	208V	Included	96.5%	HW	HW + (4) L6-30R	6.8 x 17.3 x 32.6 in., 188.7 lb.
9PX8KMG2 bundle includes: 9PX8KG2 UPS + MBP11K208G2 maintenance bypass module. See below for bypass description.								
9PX8KTF5G2	7U	8000/8000	208V/208V + 120V	Included	96.5%	HW	HW + (3) L6-30R + (18) 5-20R	12 x 17.3 x 32.6 in., 315 lb.
9PX8KTF5G2 bundle includes: 9PX8KG2 UPS + 9PXTFMR5G2 step-down transformer + MBP11K208G2 maintenance bypass module. See below for transformer and bypass description.								
9PX11KMG2	4U	11000/11000	208V	Included	97%	HW	HW + (4) L6-30R	6.8 x 17.3 x 32.6 in., 188.7 lb.
9PX11KMG2 bundle includes: 9PX11KG2 UPS + MBP11K208G2 maintenance bypass module. See below for bypass description.								
9PX11KTF11G2	7U	11000/11000	208V/208V + 120V	Optional	97%	HW	HW + (8) 5-20R + (2) L14-30R + (4) L6-30R	12 x 17.3 x 28.6 in., 377 lb.
9PX11KTF11G2 bundle includes: 9PX11KG2 UPS + 9PXTFMR11G2 step-down transformer. See below for transformer description.								
9PX11KTF11MG2	7U	11000/11000	208V/208V + 120V	Included	97%	HW	HW + (8) 5-20R + (2) L14-30R + (4) L6-30R	12 x 17.3 x 32.6 in., 392 lb.
9PX11KTF11MG2 bundle includes: 9PX11KG2 UPS + 9PXTFMR11G2 step-down transformer + MBP11K208G2 maintenance bypass module. See below for transformer and bypass description.								
9PX11KTF5G2	7U	11000/11000	208V/208V + 120V	Included	97%	HW	HW + (3) L6-30R + (18) 5-20R	12 x 17.3 x 32.6 in., 315 lb.
9PX11KTF5G2 bundle includes: 9PX11KG2 UPS + 9PXTFMR5G2 step-down transformer + MBP11K208G2 maintenance bypass module. See below for transformer and bypass description.								

All 9PX G2 VRLA UPS models include a 3-year limited warranty, network management card (NETWORK-M3), 4-post rack rail kit(s) and tower stands. Product certifications and compliance: UL (USA and Canada); CE (Europe); EN 62040-2; FCC Part 15 Class A (USA); NOM (Mexico); ENERGY STAR; RoHS. * 9PX6KG2/9PX6KIECG2 maximum output: 5400W at 240V with L6-30P; 4800W at 208V with L6-30P; 6000W with hardwired input and 40A input breaker. Due to continuous improvement programs, all specifications are subject to change without notice.

Transformers, PPDMs and maintenance bypass modules

Transformers	
Catalog number	Description
9PXTFMR5G2	9PX G2 5 kVA step-down transformer, 3U, L6-30P input, (18) 5-20R output.
9PXTFMR11G2	9PX G2 10 kVA step-down transformer, 3U, hardwired input, hardwired + (2) L14-30R + (8) 5-20R output.

PowerPass distribution modules (PPDMs) for 9PX3K3UG2, 9PX5KG2, 9PX6KG2 and 9PX6KG2-L	
Catalog number	Description
9PXPPDM1G2	9PX G2 PowerPass distribution module (PPDM), 3U, L6-30P input, (1) L14-30R + (1) L6-30R + (6) 5-20R output, maintenance bypass switch.
9PXPPDM2G2	9PX G2 PowerPass distribution module (PPDM), 3U, hardwired input, hardwired output, maintenance bypass switch.

Maintenance bypass modules	
Catalog number	Description
MBP6K208G2	9PX G2 hot-swap maintenance bypass module, hardwired + (2) L6-30R + (2) L6-20R output. Compatible with 9PX3K3UG2, 9PX5KG2, 9PX6KG2, 9PX6KIECG2, 3–6 kVA TFSG2 bundles and 9PX6KG2-L.
MBP6KIECG2	9PX G2 hot-swap maintenance bypass module, hardwired + (3) C39 + (2) C13 output. Compatible with 9PX3K3UG2, 9PX5KG2, 9PX6KG2, 9PX6KIECG2 and 9PX6KG2-L.
MBP11K208G2	9PX G2 hot-swap maintenance bypass module, hardwired + (4) L6-30R output. Compatible with 9PX8KG2, 9PX11KG2, 9PX11KTF11G2, 9PX8KG2-L and 9PX11KG2-L.

Eaton 9PX G2 UPS accessories

For complete technical specifications, please visit Eaton.com/9PXG2

Extended battery modules (EBMs) and accessories

Catalog number	Description
9PXEBM180RTG2	9PX G2 3U rack/tower EBM, 180V VRLA. Compatible with 3–6 kVA 9PX G2 VRLA UPS. Connect up to 12 EBMs per UPS. Includes 1 ft. EBM cable. 5.1 x 17.3 x 25 in., 144.8 lb.
9PXEBM240RTG2	9PX G2 3U rack/tower EBM, 240V VRLA. Compatible with 8–11 kVA 9PX G2 VRLA UPS. Connect up to 12 EBMs per UPS. Includes 1.3 ft. EBM cable. 5.1 x 17.3 x 26.4 in., 136.7 lb.
EBMCBL180RT	6 ft. EBM cable extension (180V).
EBMCBL240RT	6 ft. EBM cable extension (240V).
CBLADAPT180RT	Adapter cable to connect 9PX G1 UPS or EBM to 9PX G2 UPS or EBM (180V).
CBLADAPT240RT	Adapter cable to connect 9PX G1 UPS, EBM or SC240RT to 9PX G2 UPS or EBM (240V).

Network management accessories

Catalog number	Description
NETWORK-M3	Network management card with Web/SNMP and UL/IEC certified cybersecurity. (Bundled with all 9PX G2 UPS models listed in this brochure.)
EM PDT1H1C2	Environmental monitoring probe with temperature, humidity and dry contact monitoring. (Connects to NETWORK-M3.)
INDGW-M3	Industrial gateway card with Web/SNMP, industrial protocol support and UL/IEC certified cybersecurity.
RELAY-MS	Relay/serial interface card.

Other hardware accessories

Catalog number	Description
RK2PC	2-post rack mounting rail kit for 9PX G2 UPS or EBM. (One kit required per cabinet.)
BINTSYS	Battery integration system. Vertical mounting platform with caster wheel kit. 1540 lb. weight capacity

Rackmount power distribution units (PDUs) (For additional PDU options, visit Eaton.com/PDU. For hardwired connections, contact Eaton.)

Catalog number	Description
EMAT09-10	1.92 kW managed rack PDU, 1U, L5-20P / 5-20P input, (8) 5-20R outlets. Compatible with 9PX3K3UNTF5G2, 9PX5KP1G2, 9PX5KTF5G2, 9PX6KP1G2, 9PX6KTF5G2, 9PX11KTF11G2, 9PX11KTF11MG2, 9PX11KTF5G2.
EMI200-10	5.76 kW metered input rack PDU, 0U vertical, L14-30P input, (20) C13 / (6) C19 / (8) 5-20R outlets. Compatible with 9PX3K3UNP1G2, 9PX5KP1G2, 9PX6KP1G2, 9PX11KTF11G2, 9PX11KTF11MG2.
EVMAL620A	3.8 kW managed rack PDU G4, 0U vertical, C20 / L6-20P input, (12) C13 / (12) C39 outlets. Compatible with 9PX3K3UG2, 9PX5KG2, 9PX6KG2, 9PX8KG2, 9PX11KG2, 9PX3K3UNP1G2, 9PX5KTF5G2, 9PX6KTF5G2.
EVMAL630A	5.8 kW managed rack PDU G4, 0U vertical, L6-30P input, (12) C13 / (12) C39 outlets. Compatible with 9PX3K3UG2, 9PX5KG2, 9PX6KG2, 9PX8KG2, 9PX11KG2, 9PX3K3UNP1G2, 9PX3K3UNTF5G2, 9PX5KP1G2, 9PX5KTF5G2, 9PX6KP1G2, 9PX6KTF5G2, 9PX11KTF11G2, 9PX11KTF11MG2, 9PX11KTF5G2.
EVMAL630B	5.8 kW managed rack PDU G4, 0U vertical, L6-30P input, (10) C13 / (10) C39 outlets. Compatible with 9PX3K3UG2, 9PX5KG2, 9PX6KG2, 9PX8KG2, 9PX11KG2, 9PX3K3UNP1G2, 9PX3K3UNTF5G2, 9PX5KP1G2, 9PX5KTF5G2, 9PX6KP1G2, 9PX6KTF5G2, 9PX11KTF11G2, 9PX11KTF11MG2, 9PX11KTF5G2.
EVMAL630X	5.8 kW managed rack PDU G4, 0U vertical, L6-30P input, (24) C13 / (18) C39 outlets. Compatible with 9PX3K3UG2, 9PX5KG2, 9PX6KG2, 9PX8KG2, 9PX11KG2, 9PX3K3UNP1G2, 9PX3K3UNTF5G2, 9PX5KP1G2, 9PX5KTF5G2, 9PX6KP1G2, 9PX6KTF5G2, 9PX11KTF11G2, 9PX11KTF11MG2, 9PX11KTF5G2.
EVMIL620A	3.8 kW metered input rack PDU G4, 0U vertical, C20 / L6-20P input, (12) C13 / (12) C39 outlets. Compatible with 9PX3K3UG2, 9PX5KG2, 9PX6KG2, 9PX8KG2, 9PX11KG2, 9PX3K3UNP1G2, 9PX5KTF5G2, 9PX6KTF5G2.
EVMIL630X	5.8 kW metered input rack PDU G4, 0U vertical, L6-30P input, (24) C13 / (18) C39 outlets. Compatible with 9PX3K3UG2, 9PX5KG2, 9PX6KG2, 9PX8KG2, 9PX11KG2, 9PX3K3UNP1G2, 9PX3K3UNTF5G2, 9PX5KP1G2, 9PX5KTF5G2, 9PX6KP1G2, 9PX6KTF5G2, 9PX11KTF11G2, 9PX11KTF11MG2, 9PX11KTF5G2.
PDU1230	5.8 kW basic rack PDU, 1U, L6-30P input, (16) C13 / (4) C19 outlets. Compatible with 9PX3K3UG2, 9PX5KG2, 9PX6KG2, 9PX8KG2, 9PX11KG2, 9PX3K3UNP1G2, 9PX3K3UNTF5G2, 9PX5KP1G2, 9PX5KTF5G2, 9PX6KP1G2, 9PX6KTF5G2, 9PX11KTF11G2, 9PX11KTF11MG2, 9PX11KTF5G2.
PDUH20DV	1.6-3.8 kW basic rack PDU, 1U, C20 / L6-20P input, (12) C13 / (2) C19 outlets. Compatible with 9PX3K3UG2, 9PX5KG2, 9PX6KG2, 9PX8KG2, 9PX11KG2, 9PX3K3UNP1G2, 9PX3K3UNTF5G2, 9PX5KTF5G2, 9PX6KTF5G2.
PDUMH20	2.4 kW metered outlet rack PDU, 1U, L5-20P / 5-20P input, (12) 5-20R outlets. Compatible with 9PX3K3UNTF5G2, 9PX5KP1G2, 9PX6KTF5G2, 9PX11KTF5G2.
PDUMH20ATNET	1.9 kW switched rack PDU with ATS, 1U, (2) L5-20P / 5-20P inputs, (16) 5-20R outlets. Compatible with 9PX3K3UNTF5G2, 9PX5KP1G2, 9PX6KTF5G2, 9PX11KTF5G2.
PDUMV20HV	3.7 kW metered outlet rack PDU, 0U vertical, C20 / L6-20P input, (32) C13 / (6) C19 outlets. Compatible with 9PX3K3UG2, 9PX5KG2, 9PX6KG2, 9PX8KG2, 9PX11KG2, 9PX3K3UNP1G2, 9PX3K3UNTF5G2, 9PX5KTF5G2, 9PX6KTF5G2.
PDUMV30HV	5.5 kW metered outlet rack PDU, 0U vertical, L6-30P input, (24) C13 / (6) C19 outlets. Compatible with 9PX3K3UG2, 9PX5KG2, 9PX6KG2, 9PX8KG2, 9PX11KG2, 9PX3K3UNP1G2, 9PX3K3UNTF5G2, 9PX5KP1G2, 9PX5KTF5G2, 9PX6KP1G2, 9PX6KTF5G2, 9PX11KTF11G2, 9PX11KTF11MG2, 9PX11KTF5G2.

UPS services (For more information, visit Eaton.com/SinglePhaseService)

Catalog number	Description
AS00NXXX-6009UC	Scheduled onsite assembly 24/7 for 3–6 kVA UPS.
AS00NXXX-11000UC	Scheduled onsite assembly 24/7 for 8–11 kVA UPS.
9SW3Y-3000UC	3-year advanced depot exchange for 3 kVA UPS.
9SW3Y-6000UC	3-year advanced depot exchange for 5–6 kVA UPS.
9SW3Y-11000UC	3-year advanced depot exchange for 8–11 kVA UPS.
9SW5Y-3000UC	5-year advanced depot exchange for 3 kVA UPS.
9SW5Y-6000UC	5-year advanced depot exchange for 5–6 kVA UPS.
9SW5Y-11000UC	5-year advanced depot exchange for 8–11 kVA UPS.
WFLN72XX-6009UC	2-year onsite service 24/7 with next-day response for 3–6 kVA UPS.
WFLN72XX-11000UC	2-year onsite service 24/7 with next-day response for 8–11 kVA UPS.
WFLN73XX-6009UC	3-year onsite service 24/7 with next-day response for 3–6 kVA UPS.
WFLN73XX-11000UC	3-year onsite service 24/7 with next-day response for 8–11 kVA UPS.
WFLN75XX-6009UC	5-year onsite service 24/7 with next-day response for 3–6 kVA UPS.
WFLN75XX-11000UC	5-year onsite service 24/7 with next-day response for 8–11 kVA UPS.
0005NXXX-6009UC	Onsite preventive maintenance 24/7 for 3–6 kVA UPS.
0005NXXX-11000UC	Onsite preventive maintenance 24/7 for 8–11 kVA UPS.
SU05NXXX-6009UC	Onsite startup 24/7 for 3–6 kVA UPS.
SU05NXXX-11000UC	Onsite startup 24/7 for 8–11 kVA UPS.

See website for additional information, including available service areas.

Rack enclosures (For more options, visit Eaton.com/racks)

Catalog number	Type	Height	Width	Maximum device depth	Weight capacity	Color
SR12UB	Compact	12U	23.6 in.	32.5 in.	1000 lb.	Black
SR18UB	Compact	18U	23.6 in.	32.5 in.	1000 lb.	Black
SR24UB	Compact	24U	23.6 in.	32.5 in.	1000 lb.	Black
SR25UB	Standard	25U	23.6 in.	37 in.	3500 lb.	Black
SR42UB	Standard	42U	23.6 in.	37 in.	3500 lb.	Black
SR42UBDP	Standard	42U	23.6 in.	42 in.	3500 lb.	Black
SR45UB	Standard	45U	23.6 in.	37 in.	3500 lb.	Black
SR45UBDP	Standard	45U	23.6 in.	42 in.	3500 lb.	Black
SR42UBDPWD	Standard	42U	29.5 in.	42 in.	3500 lb.	Black
SRH422442W	Heavy-duty	42U	23.6 in.	41 in.	5000 lb.	White
SRH422446W	Heavy-duty	42U	23.6 in.	46 in.	5000 lb.	White
SRH452442W	Heavy-duty	45U	23.6 in.	41 in.	5000 lb.	White
SRH452446W	Heavy-duty	45U	23.6 in.	46 in.	5000 lb.	White
SRH483246W	Heavy-duty	48U	31.5 in.	46 in.	5000 lb.	White
SRH483254W	Heavy-duty	48U	31.5 in.	54 in.	5000 lb.	White
SRW12UHD	Wall-mount*	12U	36.2 in.	32.5 in.	500 lb.	Black
SRW18UHD	Wall-mount*	18U	36.2 in.	32.5 in.	500 lb.	Black

* Mounted sideways to reduce depth from wall and maximize stability.

Eaton 9PX G2 VRLA UPS battery backup runtime (minutes)

UPS catalog numbers	Load	Battery configuration												
		Internal	+ 1 EBM	+ 2 EBMs	+ 3 EBMs	+ 4 EBMs	+ 5 EBMs	+ 6 EBMs	+ 7 EBMs	+ 8 EBMs	+ 9 EBMs	+ 10 EBMs	+ 11 EBMs	+ 12 EBMs
9PX3K3UG2 9PX3K3UNP1G2 9PX3K3UNP2G2 9PX3K3UNTF5G2	10% (300W)	104.0	348.9	625.0	936.3	>1200	>1200	>1200	>1200	>1200	>1200	>1200	>1200	>1200
	20% (600W)	52.8	184.3	324.0	473.2	632.8	803.6	986.0	1180.5	>1200	>1200	>1200	>1200	>1200
	30% (900W)	34.6	124.8	220.2	319.7	423.8	532.8	647.0	766.5	891.4	1021.8	1157.7	>1200	>1200
	40% (1200W)	24.5	91.8	163.3	236.9	313.1	391.9	473.5	558.1	645.7	736.4	830.2	927.2	1027.4
	50% (1500W)	18.5	71.8	128.9	187.5	247.5	309.2	372.7	438.0	505.1	574.3	645.4	718.5	793.7
	60% (1800W)	14.6	58.2	105.7	154.3	203.8	254.5	306.3	359.3	413.6	469.3	526.3	584.6	644.4
	70% (2100W)	12.3	49.5	90.4	132.6	175.8	219.9	264.9	310.8	357.6	405.3	453.8	503.3	553.6
	80% (2400W)	10.3	42.3	77.8	114.5	152.0	190.3	229.3	269.0	309.3	350.4	392.1	434.5	477.6
	90% (2700W)	8.7	36.7	68.0	100.4	133.5	167.2	201.5	236.4	271.8	307.8	344.2	381.3	418.9
100% (3000W)	7.5	32.2	60.1	89.1	118.7	148.8	179.4	210.5	242.0	274.0	306.4	339.2	372.5	
9PX5KG2 9PX5KP1G2 9PX5KP2G2 9PX5KTF5G2	10% (500W)	67.1	229.7	405.3	595.8	802.9	1027.2	>1200	>1200	>1200	>1200	>1200	>1200	>1200
	20% (1000W)	30.4	113.3	200.1	290.1	383.9	481.8	584.2	691.2	802.9	919.4	1041.0	1167.5	>1200
	30% (1500W)	18.9	73.0	131.1	190.6	251.6	314.4	378.9	445.4	513.8	584.2	656.7	731.2	807.9
	40% (2000W)	12.9	52.2	95.4	139.5	184.5	230.3	277.1	324.8	373.7	423.5	474.5	526.7	580.0
	50% (2500W)	9.4	39.6	73.7	108.7	144.2	180.2	216.7	253.9	291.7	330.1	369.2	409.0	449.5
	60% (3000W)	7.1	31.4	59.5	88.4	117.7	147.4	177.5	207.9	238.8	270.1	301.8	334.0	366.6
	70% (3500W)	6.0	26.7	50.3	75.0	100.2	125.9	151.9	178.3	205.1	232.2	259.6	287.3	315.4
	80% (4000W)	4.9	22.4	42.8	64.1	85.9	108.2	130.7	153.5	176.6	200.0	223.6	247.5	271.6
	90% (4500W)	4.1	19.1	36.9	55.6	74.8	94.4	114.2	134.2	154.5	175.0	195.7	216.6	237.7
100% (5000W)	3.5	16.5	32.3	48.9	66.0	83.4	101.1	119.0	137.0	155.3	173.7	192.2	211.0	
9PX6KG2 9PX6KIECG2 9PX6KP1G2 9PX6KP2G2 9PX6KTF5G2	10% (540W)	61.2	210.9	371.4	544.5	731.4	932.9	1149.6	>1200	>1200	>1200	>1200	>1200	>1200
	20% (1080W)	27.3	103.3	183.0	265.2	350.5	439.3	531.7	628.0	728.2	832.5	941.0	1053.7	1170.7
	30% (1620W)	17.0	66.5	119.9	174.6	230.5	287.9	346.8	407.2	469.3	533.1	598.6	665.9	734.9
	40% (2160W)	11.5	47.2	86.9	127.4	168.7	210.6	253.3	296.9	341.3	386.6	432.9	480.1	528.2
	50% (2700W)	8.3	35.8	67.2	99.3	132.0	165.1	198.6	232.6	267.2	302.3	338.0	374.2	411.0
	60% (3240W)	6.3	28.2	54.0	80.5	107.5	134.8	162.4	190.3	218.5	247.1	276.1	305.5	335.2
	70% (3780W)	5.4	24.0	45.6	68.2	91.3	114.8	138.7	162.8	187.3	212.0	237.1	262.4	288.0
	80% (4320W)	4.4	20.1	38.7	58.1	78.1	98.5	119.1	139.9	161.1	182.4	204.0	225.7	247.7
	90% (4860W)	3.6	17.1	33.3	50.3	67.9	85.8	103.9	122.2	140.8	159.5	178.4	197.4	216.7
100% (5400W)	3.0	14.7	29.0	44.2	59.8	75.7	91.8	108.1	124.6	141.3	158.1	175.0	192.1	
9PX8KG2 9PX8KMG2 9PX8KTF5G2	10% (800W)	102.0	218.4	345.6	485.0	638.2	806.3	990.4	1191.2	>1200	>1200	>1200	>1200	>1200
	20% (1600W)	47.5	106.0	166.9	229.9	295.6	364.4	436.7	512.6	592.4	676.2	764.2	856.4	953.1
	30% (2400W)	30.4	68.7	109.5	151.0	193.5	237.2	282.2	328.7	376.8	426.6	478.0	531.3	586.3
	40% (3200W)	20.8	48.7	79.1	109.9	141.0	172.7	205.0	238.0	271.8	306.3	341.8	378.2	415.5
	50% (4000W)	15.2	36.9	61.2	85.7	110.5	135.5	160.8	186.5	212.7	239.3	266.4	294.0	322.2
	60% (4800W)	11.6	29.0	49.0	69.3	89.8	110.4	131.3	152.3	173.6	195.1	217.0	239.2	261.8
	70% (5600W)	9.7	25.1	42.3	59.8	77.5	95.3	113.2	131.3	149.5	168.0	186.7	205.7	224.9
	80% (6400W)	7.9	20.9	35.8	51.0	66.4	81.9	97.5	113.2	129.0	145.0	161.1	177.3	193.8
	90% (7200W)	6.5	17.7	30.8	44.2	57.8	71.5	85.3	99.2	113.1	127.2	141.3	155.6	170.0
100% (8000W)	5.4	15.2	26.7	38.7	50.9	63.2	75.5	87.9	100.4	112.9	125.5	138.2	151.0	
9PX11KG2 9PX11KMG2 9PX11KTF11G2 9PX11KTF11MG2 9PX11KTF5G2	10% (1100W)	74.3	160.7	252.6	350.4	455.3	568.1	689.1	819.0	958.1	1106.7	>1200	>1200	>1200
	20% (2200W)	32.2	74.7	119.0	164.1	210.3	257.9	307.1	358.0	410.8	465.6	522.4	581.3	642.4
	30% (3300W)	19.9	46.9	76.4	106.2	136.4	167.1	198.3	230.2	262.7	296.1	330.2	365.2	401.1
	40% (4400W)	13.2	32.6	54.5	76.8	99.2	121.8	144.6	167.8	191.2	215.1	239.3	263.9	288.9
	50% (5500W)	9.4	24.1	41.3	59.0	76.8	94.7	112.8	131.0	149.4	167.9	186.7	205.6	224.9
	60% (6600W)	6.9	18.5	32.6	47.2	61.9	76.8	91.7	106.7	121.8	137.0	152.3	167.8	183.4
	70% (7700W)	5.8	16.1	28.1	40.6	53.2	66.0	78.8	91.7	104.7	117.7	130.9	144.1	157.4
	80% (8800W)	4.6	13.1	23.5	34.2	45.2	56.3	67.5	78.7	89.9	101.2	112.6	124.1	135.6
	90% (9900W)	3.7	10.9	19.9	29.3	39.0	48.8	58.7	68.6	78.5	88.5	98.5	108.6	118.7
100% (11000W)	3.1	9.3	17.1	25.5	34.1	42.9	51.7	60.6	69.5	78.4	87.4	96.4	105.4	

Backup runtimes are approximate and may vary with equipment, configuration, battery age, temperature and other factors.

Learn more at: Eaton.com/9PXG2

Eaton
1000 Eaton Boulevard
Cleveland, OH 44122
United States
Eaton.com

© 2026 Eaton
All Rights Reserved
Printed in USA
Publication No. BR153194EN / 26-01-067
January 2026

Eaton is a registered trademark.
All other trademarks are property of their respective owners.

Follow us on social media to get the latest product and support information.

